

BIXOLON

Software Manual

Virtual COM for Ethernet Driver Configuration Tool

Ver. 3.15

<http://www.bixolon.com>

Table of Contents

Copyright.....	3
1. Manual Information.....	4
2. Usage Environment.....	5
2-1 Operating System Environment.....	5
2-2 Supported Printer Models.....	6
3. Software Installation & Uninstallation.....	7
3-1 Installation	7
3-2 Uninstallation	9
4. Configuration Tool Usage.....	10
4-1 Configuration Tool Functions	10
4-2 Printer Search	12
4-3 Configuration of the Ethernet and the Virtual COM Port	13
4-4 Virtual COM Port Addition.....	14
4-5 Virtual Serial Port Deletion.....	15
5. Virtual Serial Port Management.....	16
5-1 Port Deletion Via the Device Manager.....	17
5-2 Port Setting/Number Modification Via the Device Manager	18
6. Command line.....	20
6-1 Command Description.....	20
6-2 Command Option	21
7. Win32 API.....	22
7-1 File I/O API	22
7-2 Communication API	22
7-3 Precautions for Serial Communication Programming.....	22

Copyright

© BIXOLON Co., Ltd. All rights reserved.

This user manual and all property of the product are protected under copyright law. It is strictly prohibited to copy, store, and transmit the whole or any part of the manual and any property of the product without the prior written approval of BIXOLON Co., Ltd.

The information contained herein is designed only for use with this BIXOLON product. BIXOLON is not responsible for any direct or indirect damages, arising from or related to use of this information.

- The BIXOLON logo is the registered trademark of BIXOLON Co., Ltd.
- All other brand or product names are trademarks of their respective companies or organizations.

BIXOLON Co., Ltd. maintains ongoing efforts to enhance and upgrade the functions and quality of all our products.

In the following, product specifications and/or user manual content may be changed without prior notice.

Caution

Some semiconductor devices are easily damaged by static electricity. You should turn the printer "OFF", before you connect or remove the cables on the rear side, in order to guard the printer against the static electricity. If the printer is damaged by the static electricity, you should turn the printer "OFF".

1. Manual Information

This manual provides information on the usage of the “Virtual COM for Ethernet Driver” and “Configuration Tool” software associated with Ethernet interface use on BIXOLON printers.

This software can be used to set and use the Ethernet interface via the serial communication mode.

The Latest file versions is available for download from the BIXOLON website (www.bixolon.com).

2. Usage Environment

2-1 Operating System Environment

Microsoft Windows 7 (32bit, 64bit)
Microsoft Windows 8 (32bit, 64bit)
Microsoft Windows 8.1 (32bit, 64bit)
Microsoft Windows 10 (32bit, 64bit)

Microsoft Windows Server 2008 (32bit, 64bit)
Microsoft Windows Server 2008 R2 (64bit)
Microsoft Windows Server 2012 (64bit)
Microsoft Windows Server 2012 R2(64bit)
Microsoft Windows Server 2016 (64bit)
Microsoft Windows Server 2019 (64bit)

2-2 Supported Printer Models

- The “Virtual COM for Ethernet Driver” software can be used only with Ethernet-supported printers.

1) POSPrinter

SRP-270 / SRP-275 / SRP-275II / SRP-275III / SRP-280
SRP-370 / SRP-372 / SRP-500
SRP-350 / SRP-350plus / SRP-352plus
SRP-350II / SRP-350IIC / SRP-350plusII / SRP-352plusII
SRP-330 / SRP-330II / SRP-332II
SRP-340 / SRP-340II / SRP-342II
SRP-350III / SRP-352III / SRP-350plusIII / SRP-352plusIII
SRP-F310 / SRP-F312 / SRP-F310II / SRP-F312II / SRP-F313II
SRP-S300 / SRP-S320
SRP-380 / SRP-382 / SRP-383
SRP-Q300 / SRP-Q302 / SRP-QE300 / SRP-QE302 / SRP-Q200
SRP-E300 / SRP-E302 / SRP-B300
SRP-S3000 / SRP-S200
SRP-330III / SRP-332III
SRP-350V / SRP-350plusV / SRP-352V / SRP-352plusV
SRP-380II / SRP-382II

2) LabelPrinter

SLP-T400 / SLP-T403 / SLP-D420 / SLP-D423 / SLP-D220 / SLP-D223
SLP-TX400(RFID) / SLP-TX403(RFID)
SLP-TX420 / SLP-TX423 / SLP-TX220 / SLP-TX223
SLP-DX420 / SLP-DX423 / SLP-DX220 / SLP-DX223 / SLP-DL410 / SLP-DL413
SRP-770II / SRP-770III / SRP-E770III
XT5-40(RFID) / XT5-43(RFID) / XT5-46(RFID)
SRP-S3000_LABEL

XD3-40d / XD3-40t
XD5-40d / XD5-43d
XD5-40t(RFID) / XD5-43t(RFID)
XL5-40CT / XL5-43CT
XT3-40 / XT3-43

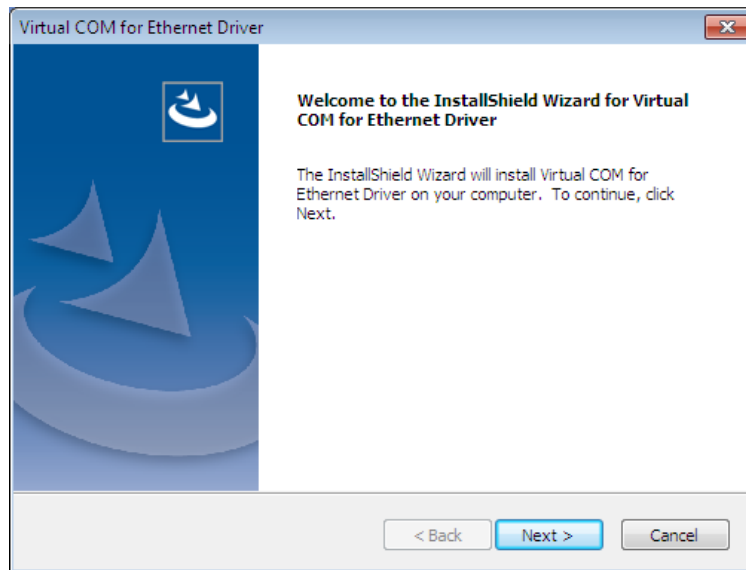
XM7-40(RFID) / XM7-20

3. Software Installation & Uninstallation

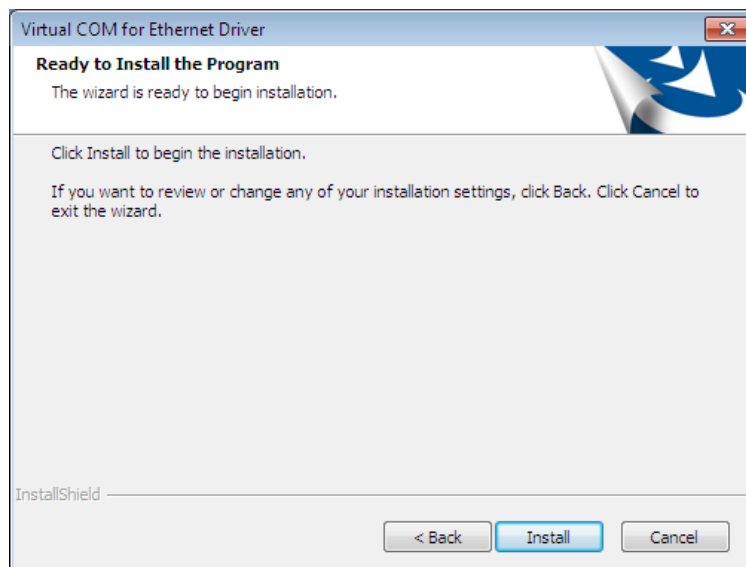
Installation and uninstallation process in this document is written based on Windows 7

3-1 Installation

- 1) Execute the installation file.
- 2) Click the “Next” button.

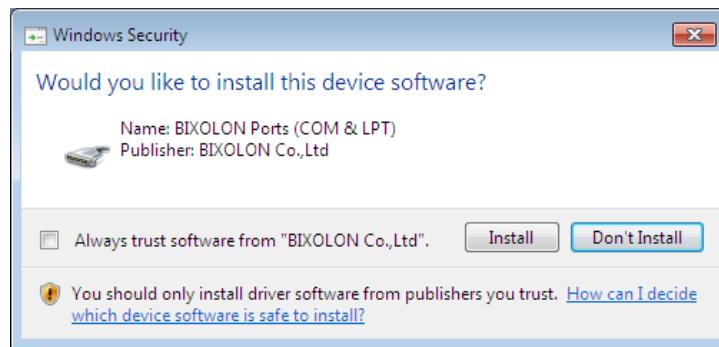


- 3) Clicking the “Install” button begins the installation process.

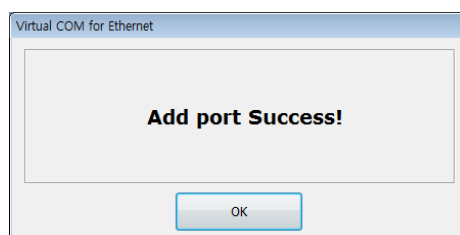


Virtual COM for Ethernet Driver

4) When the following message appears, click the “Install” button.

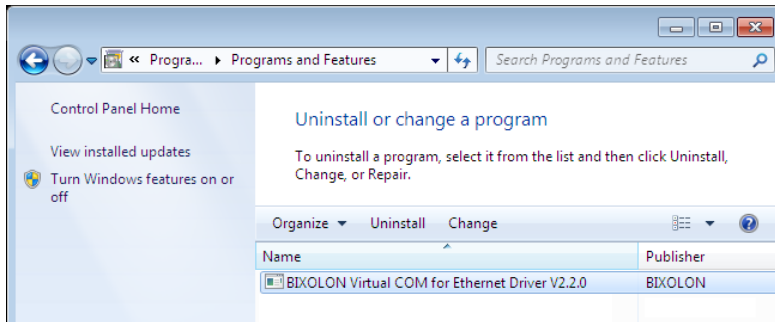


5) The following message appears upon the successful completion of installation.

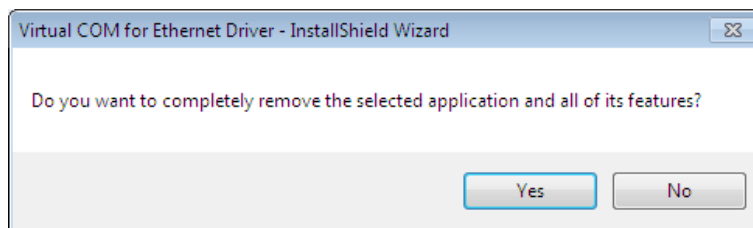


3-2 Uninstallation

- 1) Click and activate the “Uninstall a program” or “Programs and Features” icon in the Control Panel.
- 2) Select “Virtual COM for Ethernet Driver” and click the “Uninstall” button.



- 3) Click the “Yes” button to completely remove the application.

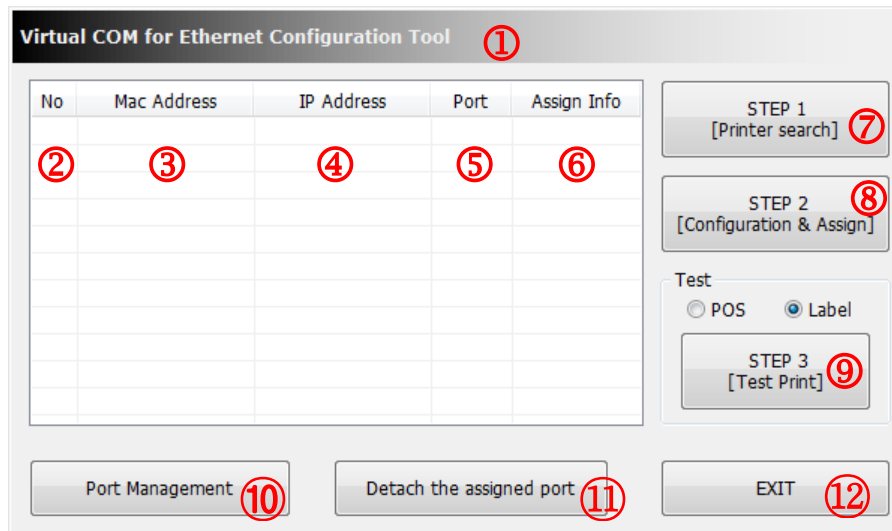


4. Configuration Tool Usage

The “Configuration Tool” program can be used to create a serial port, and set and/or delete printer devices.

4-1 Configuration Tool Functions

- Select from “Start ► All Programs ► BIXOLON ► Virtual COM for Ethernet Driver” and open “VCOM4NET Configuration Tool”.



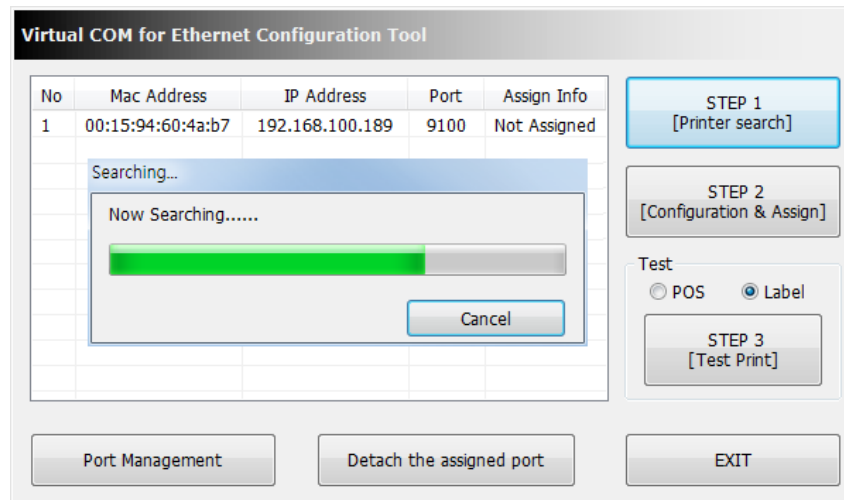
The “Configuration Tool” functions are described as follows.

- ① Main Screen
 - This is the main screen of the “Configuration Tool” program.
- ② Printer Device Sequence Number
 - This function displays the connection sequence of printer devices.
- ③ Mac Address of the connected Printer via the Ethernet interface
 - This function displays the printer device models that are turned on and connected via the Ethernet interface.
- ④ IP Address
 - This function displays the current IP Address of the connected printer via the Ethernet Interface.
- ⑤ Port Number
 - This function displays the current Port Number of the connected printer via the Ethernet Interface.

- ⑥ Assigned Info
 - This function displays the current set virtual serial port number. If one is not set, the status is shown as “Not Assigned”.
- ⑦ STEP 1 – Printer Search
 - This function is used to search the printer device models that are turned on and connected via the Ethernet interface.
- ⑧ STEP 2 – Configuration & Assign
 - This function is used to configure the Ethernet Interface and the Virtual Serial port Number.
- ⑨ STEP 3 – Test Print
 - This function is used to perform a print test on the printer selected in the list box. The serial port must be set in order to perform a print test.
- ⑩ Port Management
 - This function is used to add/remove virtual serial ports.
- ⑪ Detach the assigned port
 - This function is used to disconnect a connection between a printer selected in the list box and a virtual serial port.
- ⑫ Exit
 - This function is used to exit the “Configuration Tool” program.

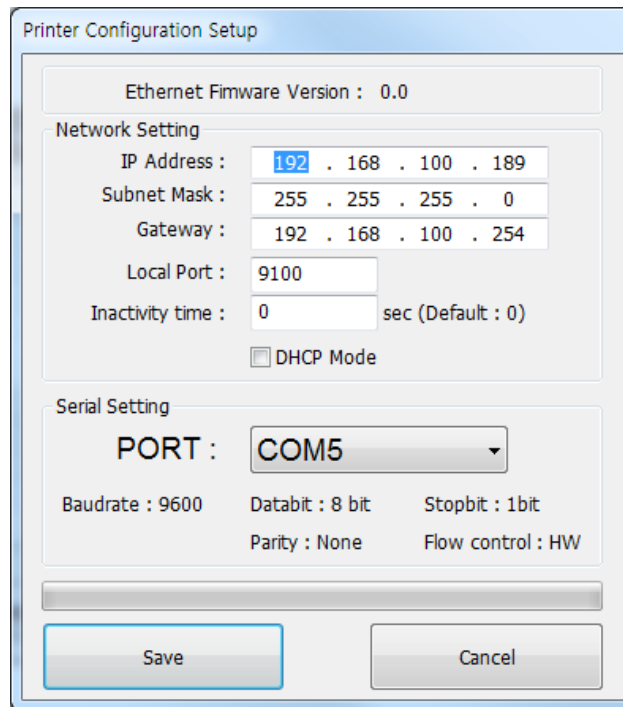
4-2 Printer Search

- The “Configuration Tool” program is used to search printers. To search the connected printer via Ethernet interface, click the “STEP 1 – Printer Search” button in the “Configuration Tool”. The following window appears while searching printers.



4-3 Configuration of the Ethernet and the Virtual COM Port

• To configure the Ethernet and the Virtual COM port, click the “STEP 2 –Configuration & Assign” button in the “Configuration Tool”. Clicking the Configuration” button brings up the following dialog box.



The dialog box is titled "Printer Configuration Setup". It contains two main sections: "Network Setting" and "Serial Setting".

Network Setting:

- Ethernet Firmware Version : 0.0
- IP Address : 192 . 168 . 100 . 189
- Subnet Mask : 255 . 255 . 255 . 0
- Gateway : 192 . 168 . 100 . 254
- Local Port : 9100
- Inactivity time : 0 sec (Default : 0)
- ☐ DHCP Mode

Serial Setting:

- PORT : COM5 (selected from a dropdown menu)
- Baudrate : 9600
- Databit : 8 bit
- Stopbit : 1bit
- Parity : None
- Flow control : HW

At the bottom, there are two buttons: "Save" and "Cancel".

- 1) Enter the IP Address, Subnet Mask, Gateway, Local Port, and Inactivity Time in the Network Setting section of the Ethernet interface settings.
- 2) Select the port number to be used from the serial ports list.
- 3) After settings, click the “Save” button.

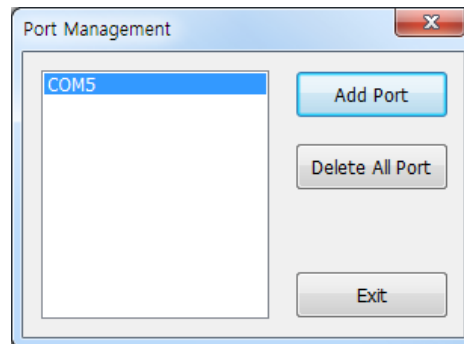


- For information regarding the “Network Setting” section, submit an inquiry to the network administrator of the corresponding area.
- When connecting a virtual serial port, if the corresponding port is connected to another printer, the existing connection is automatically disconnected and the connection is made to the selected printer.
- Following the saving of settings, a printer search is repeated.

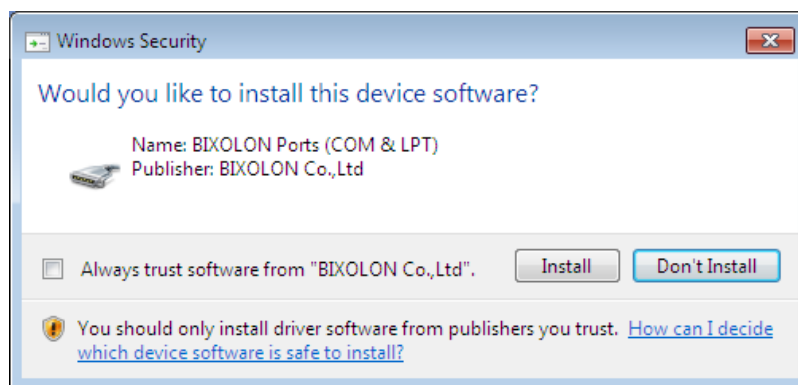
4-4 Virtual COM Port Addition

- The “Configuration Tool” program is used to add a virtual COM port.
To create a port, click the “Port Management’ button in the “Configuration Tool”.

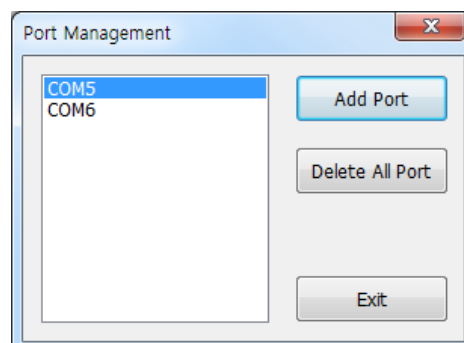
1) Clicking the “Port Management” button of the “Configuration Tool” brings up the following dialog box.



2) Click the “Add Port” button to add a port.
Click the “Install” when “Windows Security” screen below appears.



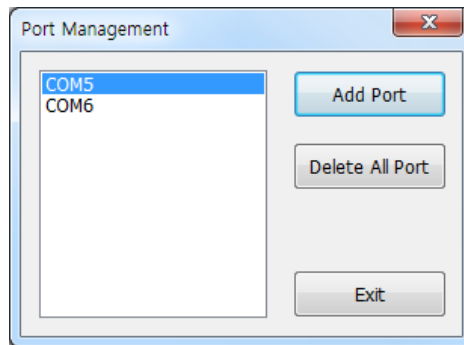
3) If the port has been added successfully, the virtual serial port added will appear as follows.



- A port number is determined by operating system.
- Refer to section 5 (Virtual Serial Port Management) of this manual for information on modifying the virtual serial port number.

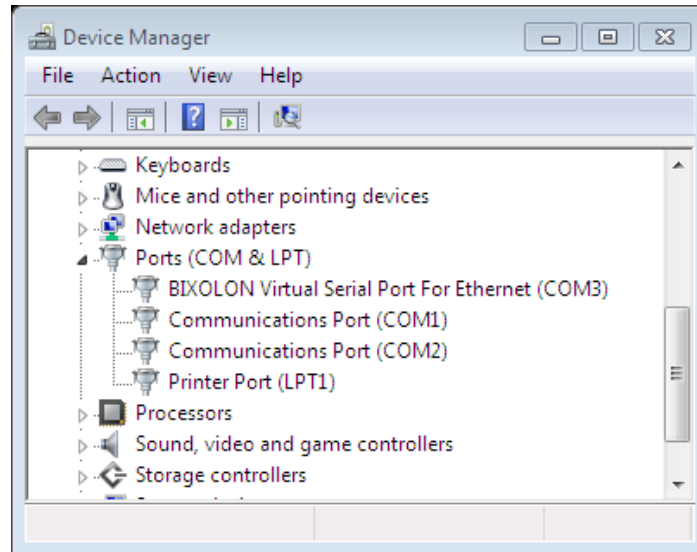
4-5 Virtual Serial Port Deletion

- Click the “Port Management” button to delete the connection settings of virtual serial ports. The “Delete All Port” button can be used to delete all virtual serial ports.



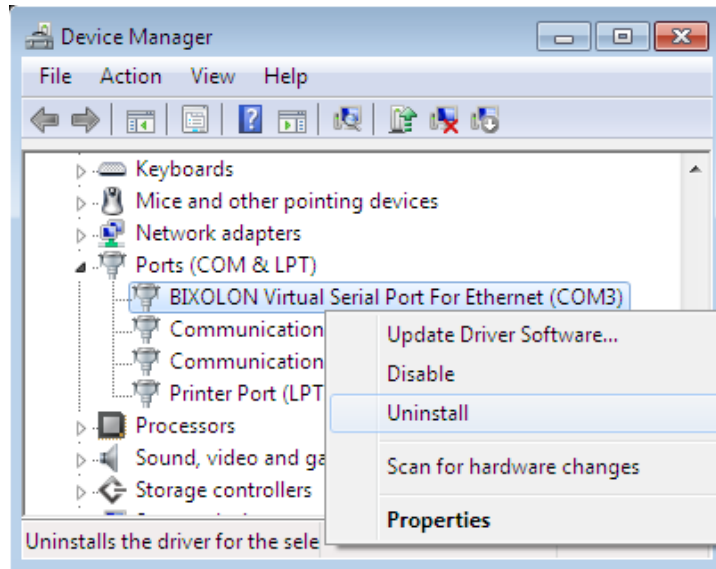
5. Virtual Serial Port Management

- 1) Port number modification, port deletion, and serial communication setting are done via the Device Manager.
- 2) Control Panel ► System ► Device Manager: Upon examination of the ports (COM & LPT) section, the port(s) added previously via the “Configuration Tool” program can be seen.



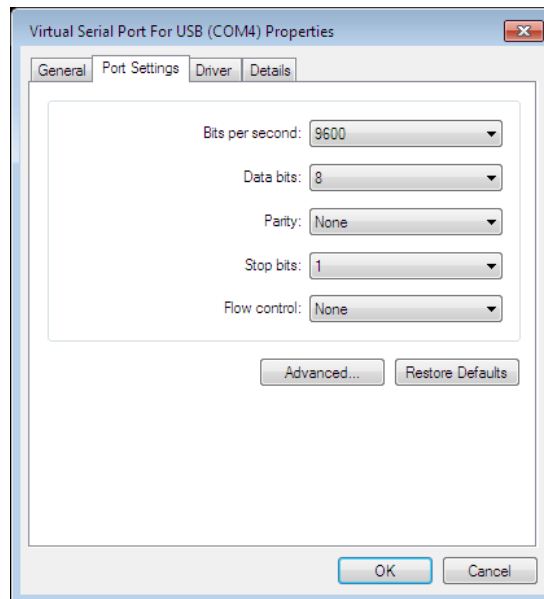
5-1 Port Deletion Via the Device Manager

- 1) Select the virtual serial port to be deleted and click the right mouse button. On the popup menu, select "Uninstall" to delete the port.
- 2) Following deletion, the "Configuration Tool" program must be executed, and the changes must be updated.



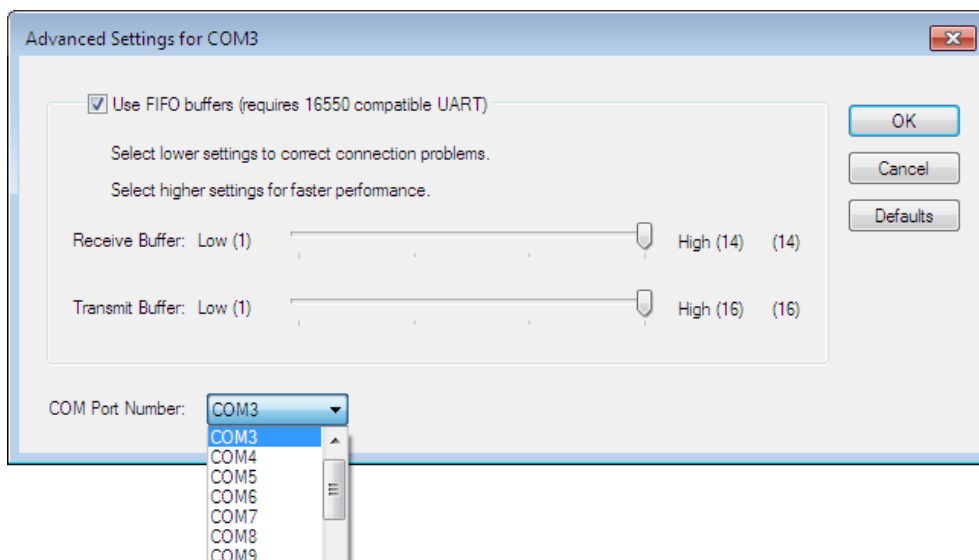
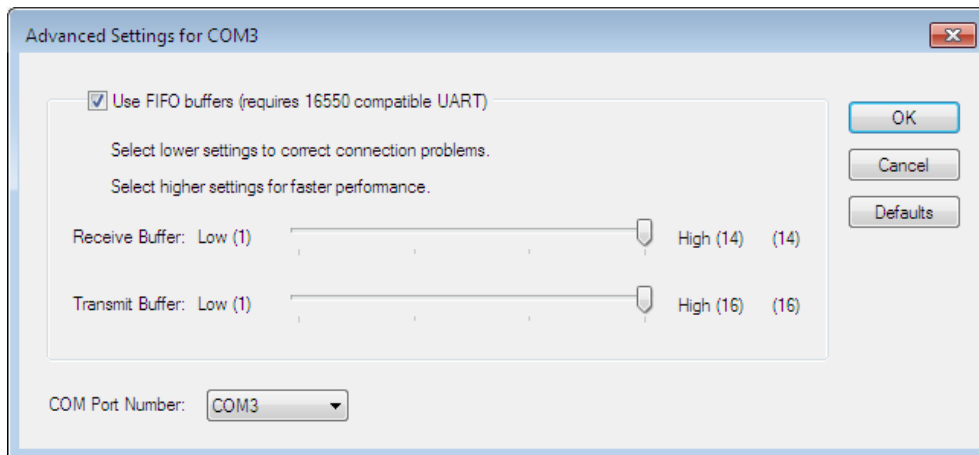
5-2 Port Setting/Number Modification Via the Device Manager

- 1) Select the desired virtual serial port and click the right mouse button. On the popup menu, select “Properties”.
- 2) In the “Properties” window, click the “Port Settings” tab.
- 3) The “Port Settings” tab can be used to set the baud rate, data bits, parity, stop bits, and flow control of a port.



Virtual COM for Ethernet Driver

- 4) Click the “Advanced” button to modify the port number and/or designate buffer settings. Modification of buffer settings is not recommended. The COM port number is changed by selecting a number in the combo box.



Following port modifications, the settings utility must be run to update changes. If a printer was connected previously, the connection setting must be disconnected.



- A port not in use must be selected.
- Following port modification, clicking the “Yes” button can result in the appearance of a warning message. Click the “Yes” button to finalize and set the modified information and settings. Port modification on certain operating systems will require the repeat opening of the Device Manager to confirm changes.
- After deleting a virtual serial port, the “Configuration Tool” program must be executed to update the Virtual COM for Ethernet Driver, and directly deleted connection Information must be removed.

6. Command line

Use the Configuration Tool functions as a command line without using the Configuration Tool. Using command lines, the UI will not be displayed. If a command fails, an error log file is created.

6-1 Command Description

Open a command window and navigate to the folder where VCOM4NET is installed.
CMD > cd "C:\BIXOLON\Virtual COM for Ethernet"



Default installation path
C:\BIXOLON\Virtual COM for Ethernet

e.g. CMD> VCOM4NET_Configuration /u /i 1 /ip 192.168.192.123 /rs

Action Description : After deleting all Virtual COM ports, add the Virtual COM1 port and assign a printer with printer's IP address 192.168.192.123. And reboot the system.

6-2 Command Option



- Values marked as '[']' in the command below are negligible.
- If /i and /u are used at the same time, /u will run first.

```
VCOM4NET_Configuration.exe [/i [PORT_NUMBER] ] [/m [MESSAGE OPTION] ]  
/ip IP_ADDRESS[:TCP_PORT] [/u]  
[/rs REBOOT_OPTION]
```

/u : Delete all installed Virtual COM ports.

/i [PORT_NUMBER] : Add Virtual COM port.

PORT_NUMBER : Specifies the Virtual COM port number to add.



If you assign the port number currently being used by the system, the system may not operate normally.

/m [MESSAGE_OPTION] : View the execution results of the installation (/i) command in the message window. If not using the /m command, the message window will not be displayed.

MESSAGE_OPTION : If the value is 1 then display message window
when installation is successful

If the value is 2 then display message window
when installation is successful or unsuccessful

/ip IP Address[:TCP_PORT] : Enter the printer's IP address. Only one Virtual COM port should exist in the system. If you don't enter TCP_PORT value, it will be set to 9100.

/rs [REBOOT_OPTION] : reboot system.

REBOOT_OPTION : If the value is 0 or does not contain a value,
reboot without notification.

If the value is 1, show the notification window and reboot



Do not reboot the system, the Virtual COM port may not function properly.

7. Win32 API

The “Virtual COM for Ethernet Driver” program can be used in serial communication programming. Refer to Microsoft MSDN regarding the Win32 API for serial communication.

7-1 File I/O API

API Name	Supported
CreateFile	O
WriteFile	O
ReadFile	O
CloseHandle	O

O : Supported, X : Unsupported

7-2 Communication API

API Name	Supported
BuildCommDCB	O
BuildCommDCBAndTimeouts	O
CommConfigDialog	O
DeviceIoControl	O
GetCommModemStatus	O
GetCommState	O
GetCommTimeouts	O
PurgeComm	O
SetCommState	O
SetCommTimeouts	O

O : Supported, X : Unsupported

7-3 Precautions for Serial Communication Programming

- When calling CreateFile function, you must prefix the port name with “\\\\.\\” depending on the range of COM port numbers.
For details, refer to the ‘port name format’ below.

* Port name format

- COM1 ~ COM9 : “COM1” ~ “COM9”
- COM10 ~ COM256 : “\\\\.\\COM10” ~ “\\\\.\\COM256”

Revision history

[illegible]